

CAD/CAM CONSULTING SERVICES INC.
SALES • SERVICE • SUPPORT

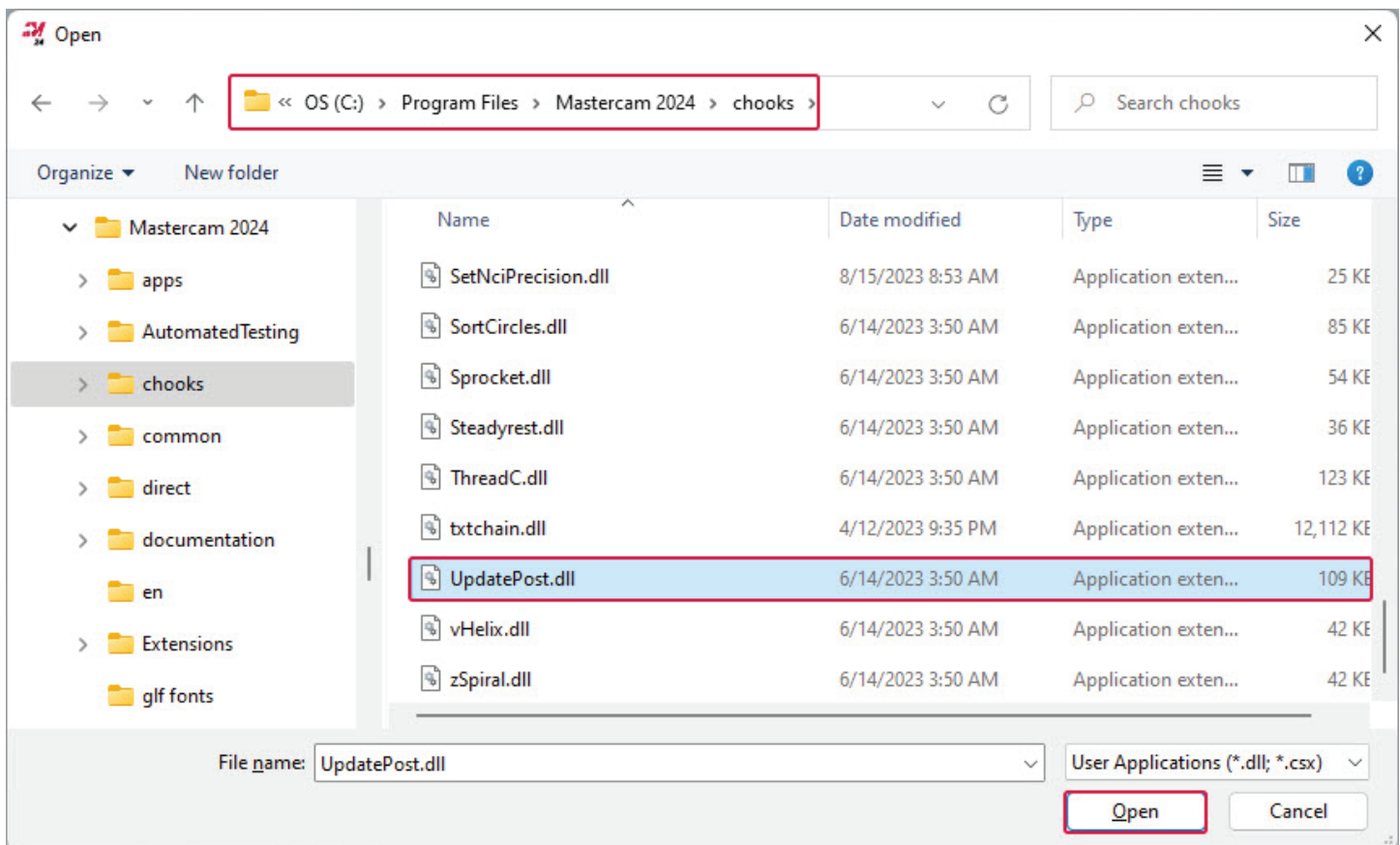
UPDATING POST PROCESSORS TO MASTERCAM 2024



Please Note: Mastercam 2024 will only update posts from 2021, 2022, and 2023. If you have an older post you, will need to update it to one of these versions before following the steps below.

1

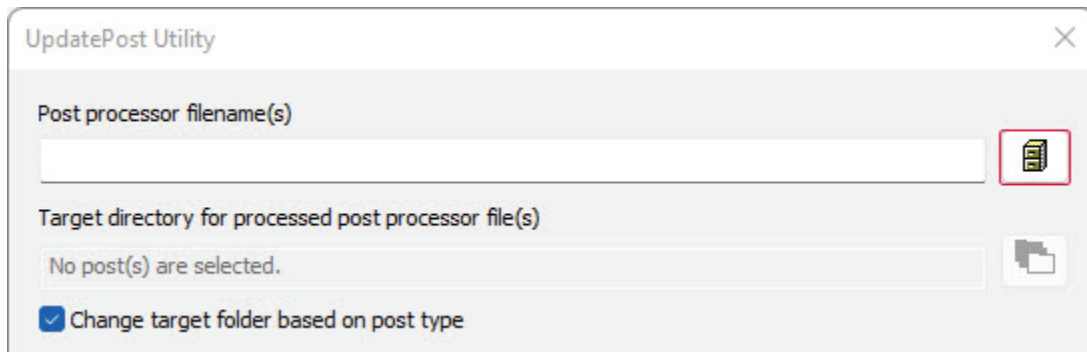
- Open Mastercam 2024.
- With the mouse focused in the main drawing area, press **Alt-C**.
- Scroll down and select **UpdatePost.dll**. You may not see the extension depending on your Windows settings.
- Click **Open**.



2

- In the Update Post Utility, click on the filing cabinet icon to browse.
- Browse to the location of the post processors for the version you are moving from.
- Here is an example of the default location of the Mill post processors:

C:\Users\Public\Documents\Shared Mastercam 2023\Mill\Posts

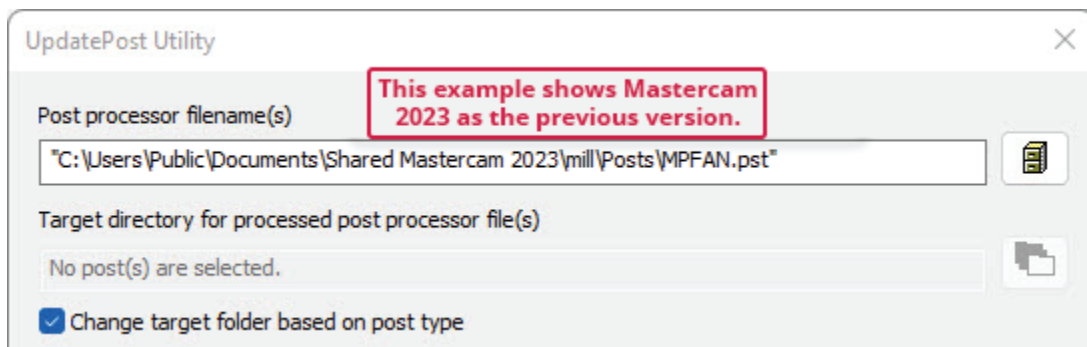


3

- Once you have located your previous version post processor, select and click **Open** to have the post processor (.pst file) entered in the box shown below. The update utility will make a copy of the new directory structure so you will not lose your original file.
- Note: .dat files will not be recognized in this step. You must manually move these files from the 2023 directory to 2024.
- For example (Mill):

Move the .dat file from: *C:\Users\Public\Shared Mastercam 2023\mill\Posts*

To: *C:\Users\Public\Shared Mastercam 2024\mill\Posts*



4

- Click **OK** (green check). Default folders are listed below for reference.
- Repeat as desired for additional post processors.

5 Updating your Machine and Control Definitions

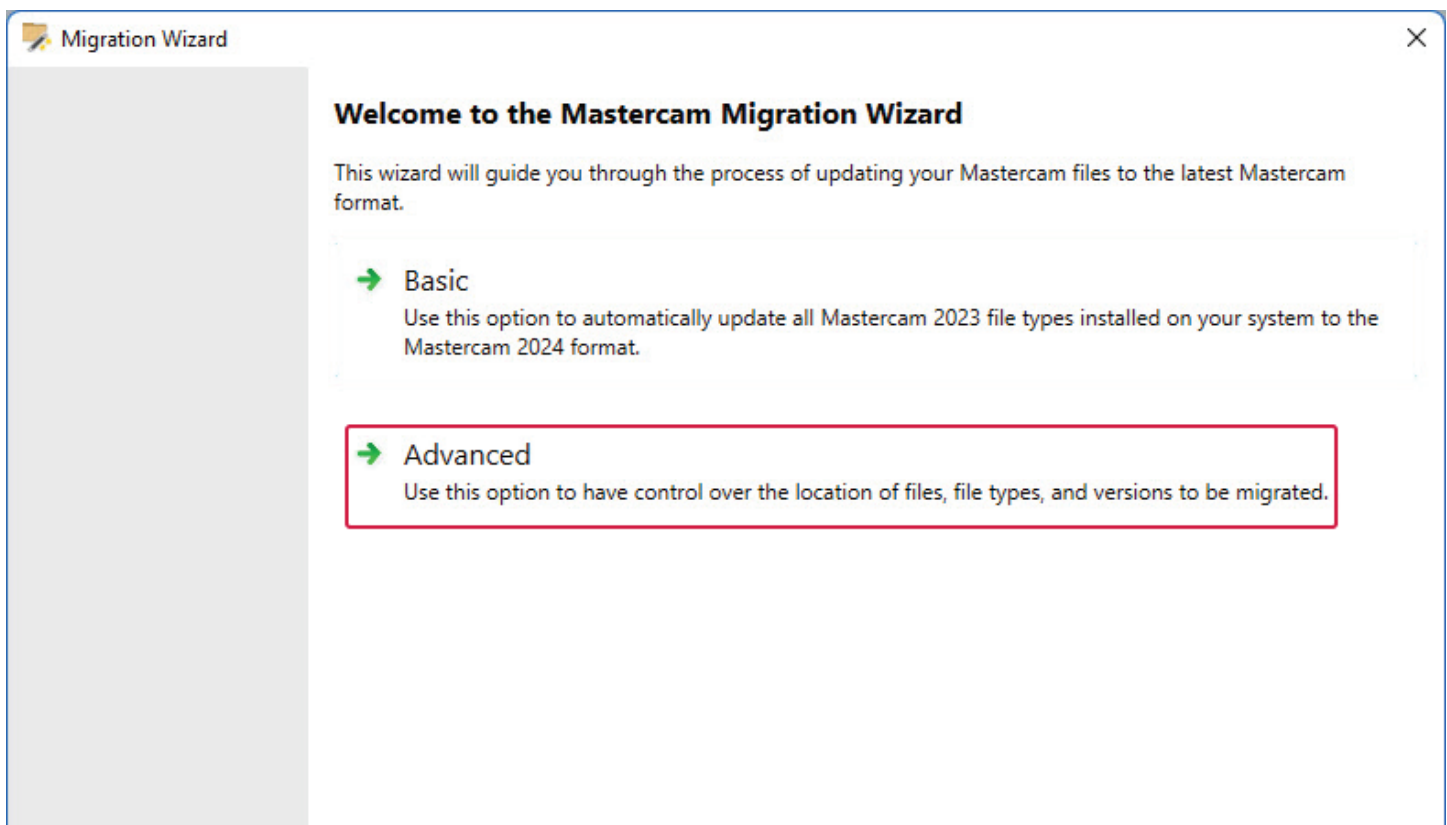
- After you have run the UpdatePost Utility on all your .pst files, it is now time to update your machine and control definitions.
- Create a temporary folder somewhere on your computer (such as Temp on your desktop).
- Using Windows Explorer or File Manager, copy the machine definitions (.mcam-mmd, .mcam-lmd, .mcam-rmd, .mcam-wmd) as well as the control definitions (.mcam-control) you want to update. These are usually found in your C:\Users\Public\Documents\Shared mastercam 2024\CNC_MACHINES directory. Now move these to your Temp directory.
- Make sure the Temp directory is empty before you copy the files as any other Mastercam machine files will get updated as well.
- Note: This step was done so you can simply choose the files that need to be updated.

6

- If you have a file open in Mastercam, make sure you save it as the next update process will not retain the file.

7

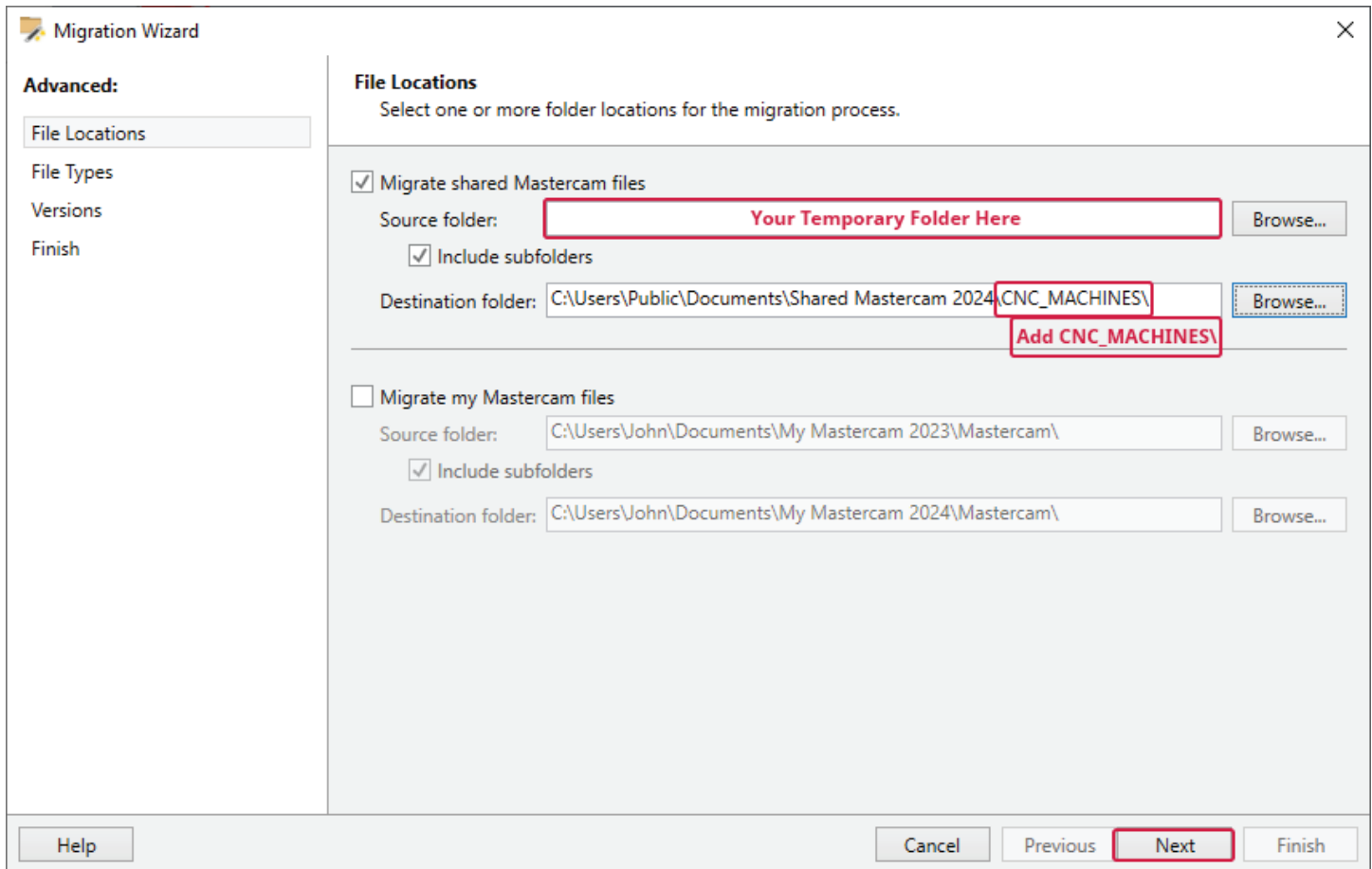
- In Mastercam, select the **File** tab and click on **Convert** in the list on the left.
- Select the **Migration Wizard** Icon and click **Advanced**.



8

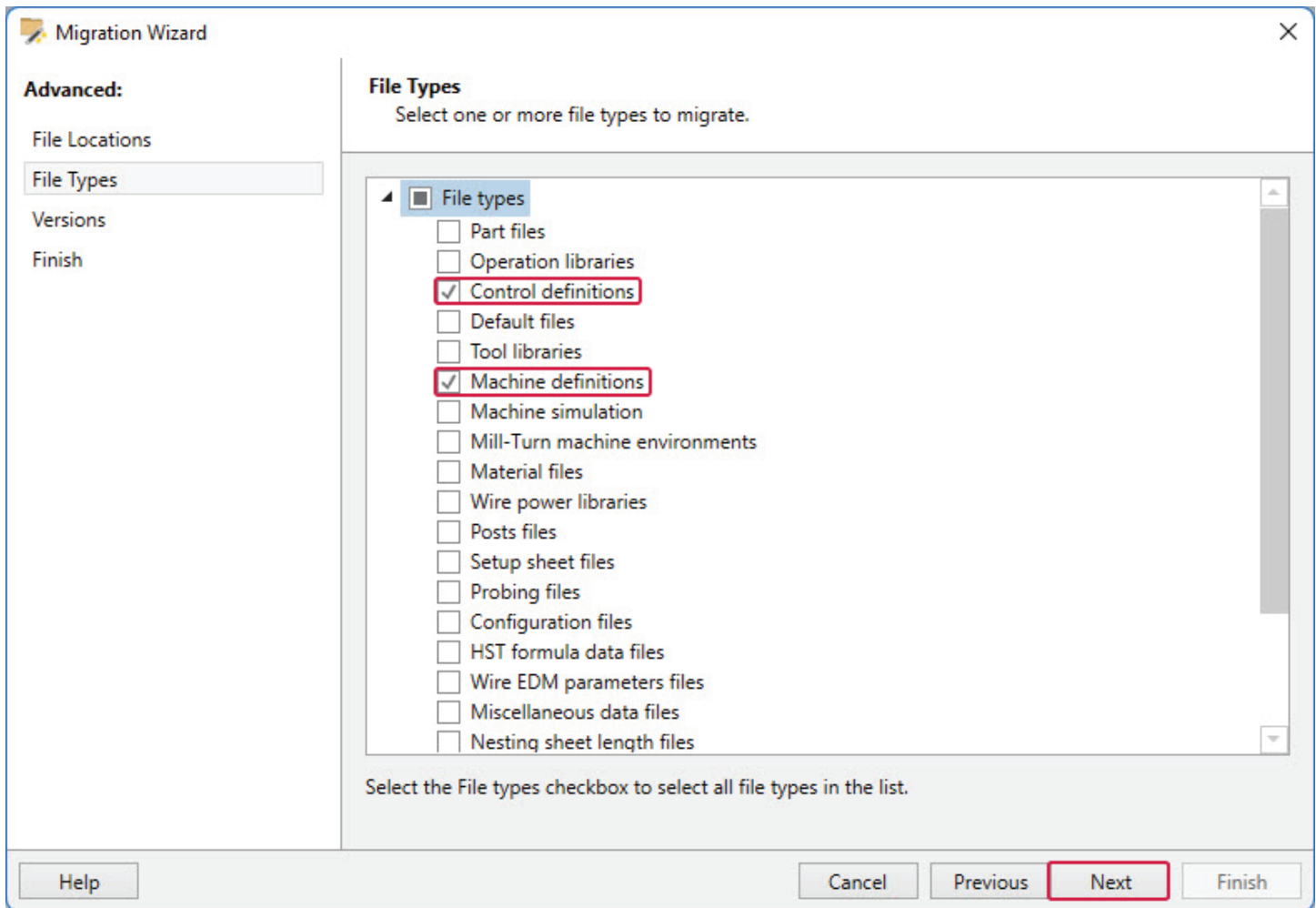
- Check the box for **Migrate shared Mastercam files**.
- Uncheck **Include sub-folders**.
- Click on the Browse button and select your Temp folder. The folder will most likely show `C:\Users\Public\Documents\shared Mastercam2024\`
- Add `CNC_MACHINES\` to the end of the directory and click **Next**.

This step is very important.



9

- Uncheck **File types** to turn all options off.
- Check **Control definitions** and **Machine definitions**, then click **Next**.
- Note: If your Temp directory only contains the Machine and Control definitions you want to update, you can leave all the versions checked and click **Next**.

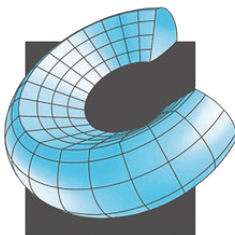


10

- Review that everything is correct, and click **Finish** and your files will be updated.

- Note: If you are updating any types of files (Tool Libraries, Material Libraries, etc.), you will follow the same steps but select your specific library destination. For example, if you're updating a Tool Library, here is an what that would look like.

We hope you have found this information helpful when updating your posts in Mastercam 2024. If you have any questions, please email us at mcsupport@cad-cam.com, or give us a call at any of the numbers below.



CAD/CAM CONSULTING SERVICES INC.

SALES • SERVICE • SUPPORT

Corporate Office

810 Lawrence Drive, Suite 220
Newbury Park, CA 91320
85-375-7676

Orange County Office

2940 E La Cresta Avenue
Anaheim, CA 92806
714-333-9020

San Diego Office

11245 W Bernardo Ct., Suite 100
San Diego, CA 92127
619-220-2411

